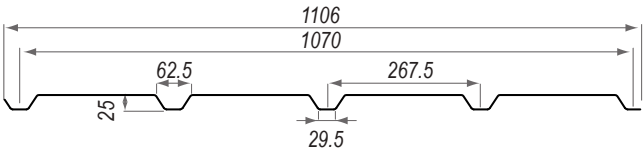


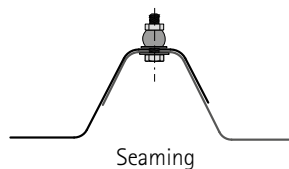
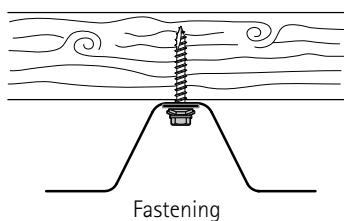
## PERFOLUX profile 25/1070B – translucent perforated sheet CLADDING ASSEMBLY

Product	Total width (mm)	Useful width (mm)
Profile 25/1070B	1106	1070



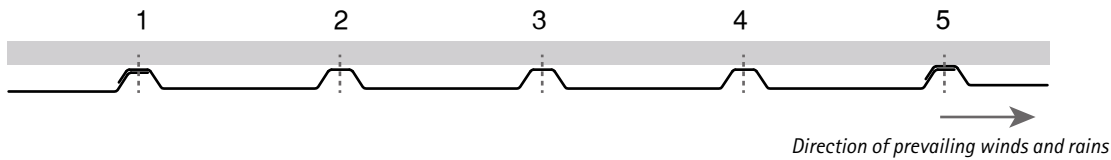
Specifications		
Range	RENOLIT ONDEX PERFOLUX	
Dimensional features (mm)	Thickness: 0.9	Perforations diameter: 5
	Space between perforations: 13	
Standard lengths	1500 - 2000 - 2500	Other lengths on request (max. 4500)
Partial perforations	On request	
Material	High resistance bi-stretched PVC	
Fire classification (EN 13501-1)	B s1 d0	
Colours	Translucent - Crystal - Opaque (on request)	
Light transmission	64 % for translucent / 82 % for crystal	
Suitable temperature range	-40°C to + 65°C	
UV protection	Both sides	
Windbreak efficiency	90 % (Eiffel Institute)	
Multiplying coefficient	8.6 (Report 14-138)	
Overlaps between sheets	Transversal: 100 mm	Longitudinal: 1 corrugation
Cutting and drilling of sheets		
Cutting tool	Standard (fine tooth saw)	
Recommended pre-drilling	Ø 10 mm / conical or centre drill used at medium speed	

Fastening		
Screw	Timber support	Screw ZAMAC 6.5 x 50 mm + washer Ø 25
	Metal support < 8 mm	Screw ZAMAC 6.3 x 33 mm + washer Ø 19
Sheets seaming	Plasteseams INOX Ø 9.6 mm	

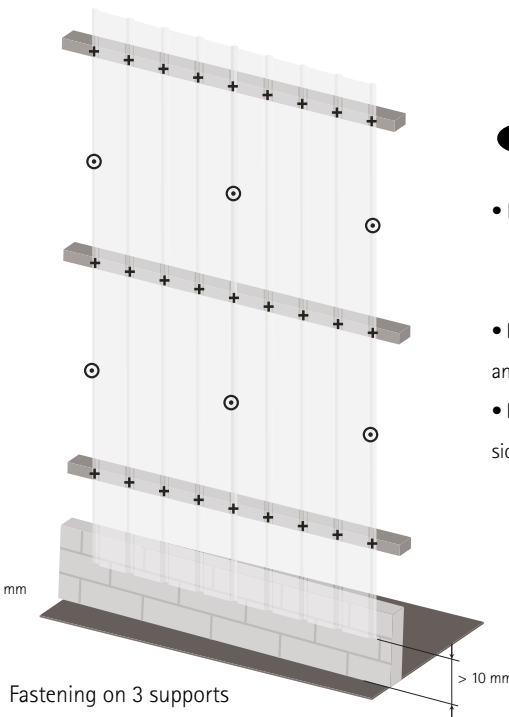
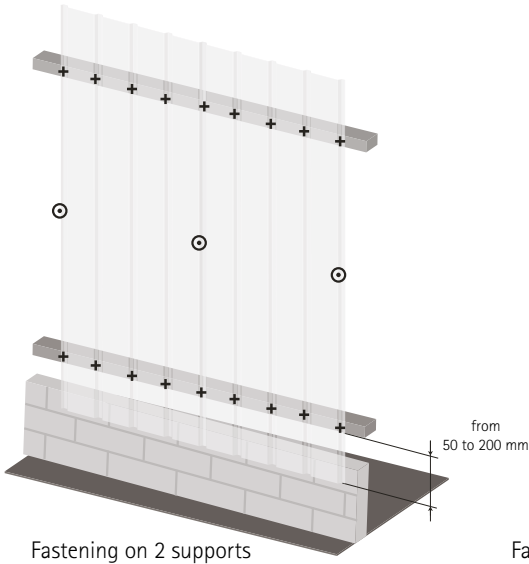


This method of installation optimizes ventilation by a lamellar airflow through the troughs. Besides it allows to evacuate moist flows outwards

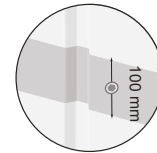
## Fastening distribution



- + Fastening in corrugation trough
- O Seaming



- Do not place the sheets directly on the ground to:
  - allow surface water to run off
  - prevent the entry of rain water between the sheets
- Eaves at the ends of the sheets must be between 50 mm and 200 mm.
- Never restrain the sheet ends. Allow for a 10 mm expansion gap at each sheet end.



Overlapping

## Recommended gap between purlins (m)

Upward loads (wind depression) daN/m <sup>2</sup>	Max. gap between purlins (m) Deflection 1/50	
	2 supports	3 supports
50	1.37	1.50
60	1.27	1.44
80	1.20	1.35
100	1.12	1.26
120	1.06	1.20
140	0.99	1.12
160	0.94	1.05

### CAUTION

➔ FOR COUNTRIES OTHER THAN FRANCE, check the admissible loads according to the calculated spans and applicable regulatory standards in the country in which the building will be constructed.

➔ This synoptic data sheet is not intended to replace a more technical documentation or technical certification with installing instructions. For further information, please contact our technical support on +33 3 80 46 80 52

<p>PVC 100 % recyclable product</p>	<p>Protect the sheets from sunlight, wind and rain with an opaque white polyethylene tarpaulin during storage and throughout the installation.</p>	<p>Do not use with insulating materials</p>	<p>Claddings with a low end which is less than 1.5 m from the ground must be protected to avoid potential deterioration through severe impacts (machines or vehicles)</p>	<p>Do not step directly on the sheets</p>
---	--	---	---	---